

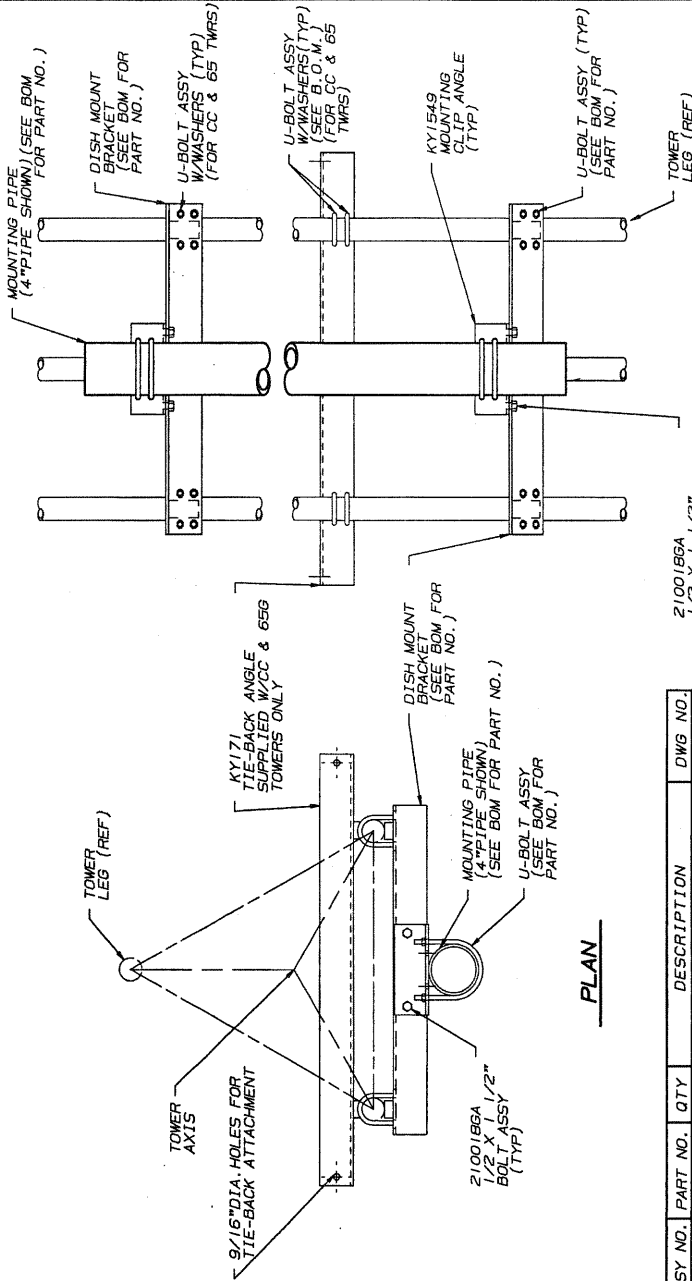
B I L L O F M A T E R I A L S

ASSY NO.	PART NO.	QTY	DESCRIPTION	DWG NO.
DM2562	KY1550	2	DISH MOUNT BRACKET	B881437
	KH279	1	MOUNTING PIPE 2"STDx5'	B770160
	KY1549	2	MOUNTING CLIP ANGLE	B881436
	2100186A	4	BOLT ASSY 1/2 X 1 1/2"	C770404
	JR66A	8	U-BOLT ASSY 3/8"	B651028
	JR61A	4	U-BOLT ASSY 3/8"	B651028
	KY1550	2	DISH MOUNT BRACKET	B881437
	KH279	1	MOUNTING PIPE 4"STDx5'	B770160
DM254	KY1549	2	MOUNTING CLIP ANGLE	B881436
	2100186A	4	BOLT ASSY 1/2 X 1 1/2"	C770404
	JR66A	8	U-BOLT ASSY 3/8"	B651028
	JR63A	4	U-BOLT ASSY 3/8"	B651028

DM4562	KY1550	2	DISH MOUNT BRACKET	B881437
	KH279	1	MOUNTING PIPE 2"STDx5'	B770160
	KY1549	2	MOUNTING CLIP ANGLE	B881436
	2100186A	4	BOLT ASSY 1/2 X 1 1/2"	C770404
	JR65A	8	U-BOLT ASSY 3/8"	B651028
	JR61A	4	U-BOLT ASSY 3/8"	B651028
	KY1550	2	DISH MOUNT BRACKET	B881437
	KH279	1	MOUNTING PIPE 4"STDx5'	B770160
DM454	KY1549	2	MOUNTING CLIP ANGLE	B881436
	2100186A	4	BOLT ASSY 1/2 X 1 1/2"	C770404
	JR65A	8	U-BOLT ASSY 3/8"	B651028
	JR63A	4	U-BOLT ASSY 3/8"	B651028

DM5562	KY1550	2	DISH MOUNT BRACKET	B881437
	KH279	1	MOUNTING PIPE 2"STDx5'	B770160
	KY1549	2	MOUNTING CLIP ANGLE	B881436
	2100186A	4	BOLT ASSY 1/2 X 1 1/2"	C770404
	JR65A	8	U-BOLT ASSY 3/8"	B651028
	JR61A	4	U-BOLT ASSY 3/8"	B651028
	KY1550	2	DISH MOUNT BRACKET	B881437
	KH279	1	MOUNTING PIPE 4"STDx5'	B770160
DM554	KY1549	2	MOUNTING CLIP ANGLE	B881436
	2100186A	4	BOLT ASSY 1/2 X 1 1/2"	C770404
	JR65A	8	U-BOLT ASSY 3/8"	B651028
	JR63A	4	U-BOLT ASSY 3/8"	B651028

DMJ2	KY1552	2	DISH MOUNT BRACKET	B881441
	KH279	1	MOUNTING PIPE 2"STDx5'	B770160
	KY1549	2	MOUNTING CLIP ANGLE	B881436
	2100186A	4	BOLT ASSY 1/2 X 1 1/2"	C770404
	JR65A	8	U-BOLT ASSY 3/8"	B651028
	JR61A	4	U-BOLT ASSY 3/8"	B651028
	KY1552	2	DISH MOUNT BRACKET	B881441
	KH279	1	MOUNTING PIPE 4"STDx5'	B770160
DMJ4	KY1549	2	MOUNTING CLIP ANGLE	B881436
	2100186A	4	BOLT ASSY 1/2 X 1 1/2"	C770404
	JR65A	8	U-BOLT ASSY 3/8"	B651028
	JR63A	4	U-BOLT ASSY 3/8"	B651028



ASSY NO.	PART NO.	QTY	DESCRIPTION	DWG NO.	
DM654	KY1555	2	DISH MOUNT BRACKET	B881440	
	KH279	1	MOUNTING PIPE 4"STDx5'	B770160	
	KY1549	2	MOUNTING CLIP ANGLE	B881436	
	2100186A	4	BOLT ASSY 1/2 X 1 1/2"	C770404	
	JR60A	8	U-BOLT ASSY 3/8"	B651028	
	JR63A	4	U-BOLT ASSY 3/8"	B651028	
	2500086	16	FLAT WASHERS 3/8"	N/A	
	KY1555	2	DISH MOUNT BRACKET	B881440	
	KY171	1	TIE-BACK ANGLE	B760806	
	KH279	1	MOUNTING PIPE 4"STDx5'	B770160	
	KY1549	2	MOUNTING CLIP ANGLE	B881436	
	DM654TB	2100186A	4	BOLT ASSY 1/2 X 1 1/2"	C770404
JR60A		12	U-BOLT ASSY 3/8"	B651028	
JR63A		4	U-BOLT ASSY 3/8"	B651028	
2500086		24	FLAT WASHERS 3/8"	N/A	
DMCC4		KY1555	2	DISH MOUNT BRACKET	B881440
		KH279	1	MOUNTING PIPE 4"STDx5'	B770160
		KY1549	2	MOUNTING CLIP ANGLE	B881436
		2100186A	4	BOLT ASSY 1/2 X 1 1/2"	C770404
		JR60A	8	U-BOLT ASSY 3/8"	B651028
		JR63A	4	U-BOLT ASSY 3/8"	B651028
		2500086	16	FLAT WASHERS 3/8"	N/A
		KY1555	2	DISH MOUNT BRACKET	B881440
	KY171	1	TIE-BACK ANGLE	B760806	
	KH279	1	MOUNTING PIPE 4"STDx5'	B770160	
	KY1549	2	MOUNTING CLIP ANGLE	B881436	
	DMCC4TB	2100186A	4	BOLT ASSY 1/2 X 1 1/2"	C770404
JR60A		12	U-BOLT ASSY 3/8"	B651028	
JR63A		4	U-BOLT ASSY 3/8"	B651028	
2500086		24	FLAT WASHERS 3/8"	N/A	

ELEVATION

GENERAL NOTES

1. DISH MOUNT SUPPLIED WITH 4"STD (4 1/2"O.D.) OR 2"STD (2 3/8"O.D.) MOUNTING PIPE. (CC & 856 TOWER SUPPLIED WITH 4"STD MOUNTING PIPE ONLY.)
2. DISH MOUNT BRACKETS AND TIE-BACK ANGLE MAY BE MOUNTED ON FACES OTHER THAN SHOWN PER ORIENTATION REQUIREMENTS.
3. DISH TIE-BACK STRUT (BY OTHERS) MUST BE AS CLOSE TO PERPENDICULAR AS POSSIBLE TO DISH FACE.
4. FLAT WASHERS ARE PROVIDED FOR ALL SLOTTED HOLES.
5. FABRICATION DRAWINGS, IF REFERENCED, ARE FOR SHOP USE ONLY.
6. PAL NUTS ARE PROVIDED FOR ALL U-BOLTS /AND BOLTS (SEE DWG. NO. A790135).
7. MOUNTING BRACKETS MUST BE LOCATED AS CLOSE AS POSSIBLE TO LEG-BRACE INTERSECTION.

REV. TO:	KD, REDRAWN & REV 65 LEG U-BOLTS	7-12-80	RKB	RL	TS
No.:	Revision Description	Date	Rev. By	Chd. By	App. By
THIS DRAWING IS THE PROPERTY OF ROHN, INC. IT IS NOT TO BE REPRODUCED OR COPIED IN WHOLE OR IN PART WITHOUT OUR WRITTEN CONSENT.					
Scale:	NONE	By	MDI	Date	10-13-76
Drawn:		Checked:	WJU	Date	10-15-76
App. Eng.:	GR	Date	10-15-76		
App. Sales:	GR	Date	10-28-76		
R O H N					
DISH MOUNT ASSEMBLY FOR MODEL NO'S 25, 45, 55, J, 65 & C TOWERS					
					DRAWING NO.: C760796 R5